

TURKEY



+90 530 768 31 16


yavuzcam.com | contact@yavuzcam.com

Organized Industrial Zone, **Arsin** / **TRABZON**


[in](https://www.linkedin.com/company/yavuzcam) /company/yavuzcam

[ig](https://www.instagram.com/yavuz_cam_trabzon) /yavuz_cam_trabzon

[yt](https://www.youtube.com/channel/UCyavuzcam61) /yavuzcam61

 /company/yavuzcam

 /yavuz_cam_trabzon

 /yavuzcam61

Organized Industrial Zone, Arsin/TRABZON
+90 530 768 31 16 | contact@yavuzcam.com
yavuzcam.com



YavuzCam

YavuzCam

ABOUT US

Yavuz Cam started its commercial activities with retail glass sales in 1970 and continued this activity until 1995. Having obtained the distributorship of Şişecam in 1976, the company has also started wholesale glass sales since that date. The company which opened its production facility in Arsin Organized Industrial Zone / Trabzon in 1992 started to produce heat-insulated glass in 1994 and became one of Şişecam's Authorized Isicam Manufacturer (IYÜ) companies. The company also held the Plaspen and Rehau dealerships between 1997-2007 and engaged in plastic joinery activities.

Yavuz Cam is one of the first technological facilities in the Eastern Black Sea region in the glass industry and closely follows the technological developments in the glass industry. In this direction, 2 glass tempering lines were established in 2007 and 2014. Temper furnaces can temper Low-E glasses with high energy efficiency.

As a result of the dealership system revised throughout the country by Şişecam in 2015, the company was determined as the only authorized wholesale glass dealer in the Eastern Black Sea region.

The company which always prioritizes high-quality production and service also gives great importance to customer satisfaction and customer focus. It aims to increase the quality and comfort of the end consumer's living standards by producing the glass groups with high energy-efficiency.

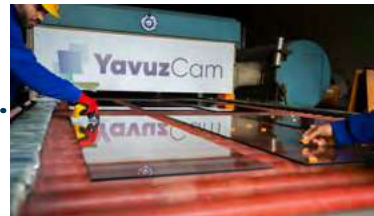
Yavuz Cam which includes various glass groups applied in residences, commercial and architectural buildings in its product portfolio has adopted the principle of being reliable and creating added value for its solution partners, customers and employees.

TIMELINE

1970-2007



2007-2014



2015-

←



Total area: **7710 m²**

Production area: **4000 m²**

Wholesale glass area: **1360 m²**

The number of employees: **55**

PRODUCTS



ŞİŞECAM CLEAN FLOAT GLASS

It is an essential product for all glass applications.



ŞİŞECAM ULTRA CLEAR FLOAT GLASS

Şişecam Ultra Clear Float Glass is a low-iron float glass of Şişecam Float Glass.

Advantages;

1- Higher light transmittance and clarity

2- Thanks to its transparency, the objects displayed behind are seen in their true colors and brightness.

3- In Şişecam Ultra Clear Float Glass, the greenish color in standard clear glass is not visible when viewed from the edge.

4- It has 91% light transmittance.

5- Laminated glass, tempered glass, heat-strengthened glass, enamel-painted glass, curved glass, coated glass and mirror can be produced by applying secondary processes.

6- It provides higher passive solar gain with maximum solar energy use in winter months.



ISICAM SYSTEMS

Isicam Systems is the brand of the insulating glass unit produced by Isicam Authorized Manufacturers which are regularly inspected by Şişecam Float Glass.

Insulating glass is formed by bringing two or more glass plates together under factory conditions providing dry air or gases suitable for ambient pressure between them.

There is a 10-year warranty in the product groups of Isicam systems (Isicam C-S-K series) against deterioration between two glasses. Non-standard glasses such as tiled, shaped, perforated glasses are not covered by the warranty.

Isicam Systems meets one or all of the thermal insulation, solar control, noise control, safety and/or security requirements depending on the characteristics of the glasses by three different series and additional features to be preferred.



ISICAM C SERIES

It is the classic series that provides standard insulation and energy savings produced with the assurance of Isicam.

Isicam Systems	Configuration	Daylight (EN 410)		Solar Energy (EN 410)		Thermal Conductivity (U) W/m2K (EN 673)	
		Transmittance %	Reflectance Outdoor %	Solar Factor %	Shading Coefficient	Dry Air	Argon
Isicam Systems C Series	4+12+4	80	14	75	0,86	2,9	2,7
	4+16+4					2,7	2,6

Isicam C L:	
L	Isicam unit, manufactured by using Şişecam Laminated Glass, offers safety and security features by preventing injuries that may be caused by the fragmentation of glass after breaking, as well as thermal insulation
Isicam C AL:	
AL	Isicam unit, manufactured by using sound insulation Şişecam Acoustic Laminated Glass, also provides noise control in addition to thermal insulation, thusly reducing the transfer of sound while also offering the safety and security features of Şişecam Laminated Glass.
Isicam C R:	
R	Isicam unit, manufactured by using the Şişecam Tinted Float Glass that provides solar control, both offers thermal insulation and limits solar heat gain in buildings, as well as controls extreme solar brightness, and reduces cooling energy consumption in air-conditioned environments.
Isicam C RF:	
RF	Isicam unit, manufactured by using Şişecam Tentesol and Şişecam Tentesol Titanium reflective glass that provides solar control, both ensures thermal insulation and limits solar heat gain in buildings, as well as controls extreme solar brightness and reduces cooling energy consumption in air-conditioned environments. It creates a mirror effect when it is viewed from the side where the light is bright, due to its reflective features. It provides visual integrity on commercial buildings with glass facades.

ISICAM S SERIES

Isicam Systems S Series is the series produced with Şişecam Low-E Glasses with high-quality heat control coating.

- Advantages;
- 1- Compared to ordinary double-glazing, it reduces heat losses by 50% and reduces fuel costs.
 - 2- While it allows you to benefit from the sun's heat at the maximum level, it does not compromise on light transmittance.
 - 3- It prevents the windows from being cold in winter and delays condensation compared to ordinary double-glazing.
 - 4- Compared to ordinary double-glazing, the expenditure you would make for Isicam S would make up to to you in 1-2 years with the savings you will get from fuel in winter.

Isicam Systems	Configuration	Daylight (EN 410)		Solar Energy (EN 410)		Thermal Conductivity (U) W/m2K (EN 673)	
		Transmittance %	Reflectance Outdoor %	Solar Factor %	Shading Coefficient	Dry Air	Argon
	4+12+4	80	14	75	0,86	2,9	2,7
	4+16+4					2,7	2,6
S	4+12+4	79	12	56	0,64	1,6	1,3
	4+16+4					1,3	1,1
K	4+12+4	71	10	44	0,51	1,6	1,3
	4+16+4					1,3	1,1

ISICAM S SERIES

L

Isicam S L:
Isicam unit, manufactured by using Şişecam Low-E Glass and Şişecam Laminated Glass that offers safety and security, both provides savings for the heating costs and prevents the fragmentation of glass upon potential injuries.

AL

Isicam S AL:
Isicam unit, manufactured by using Şişecam Low-E Glass and Şişecam Acoustic Laminated Glass, provides sound insulation in addition to saving heating costs and also has the safety and security features of Şişecam Laminated Glass.

T

Isicam S T:
It is manufactured by using the safety-providing Şişecam Temperable Low-E Glass (heat control glass). When it is broken, it fragments into small and blunt pieces thus reduces the risk of injury. That's why it is eligible for use as a safety glass. The product reduces heating costs by its heat control features.

3+

Isicam S 3+:
It is the triple glazing insulating Isicam unit which provides maximum insulation. It offers 4 times better thermal insulation compared to ordinary double glazing.

R

Isicam S R:
Isicam unit, manufactured by using Şişecam Low-E Glass and Şişecam Tinted Float Glass that provides solar control, both offers thermal insulation and limits solar heat gain in buildings, as well as controls extreme solar brightness, and reduces cooling energy consumption in air-conditioned environments.

RF

Isicam S RF:
Isicam unit, manufactured by using Şişecam Low-E Glass and Şişecam Tentesol or Şişecam Tentesol Titanium reflective glass that provides solar control, both ensures thermal insulation and limits solar heat gain in buildings, as well as controls extreme solar brightness and reduces cooling energy consumption in air-conditioned environments. It creates a mirror effect when it is viewed from the side where the light is bright, due to its reflective features. It provides visual integrity on commercial buildings with glass facades.

ISICAM K SERIES

Isicam Systems K Series is produced with Şişecam Solar Low-E Glasses with high-quality heat and solar control coating. By providing maximum thermal insulation and solar control it reduces your fuel costs in winter and air conditioning costs in summer.

Advantages;

- 1- Compared to ordinary double-glazing, it reduces heat losses by 50% and fuel costs in winter as well as reducing solar heat by 40% and air conditioning costs in summer and achieves energy savings.
- 2- While providing heat and sun control, it does not compromise on transparency and natural daylight.
- 3- It prevents the windows from being cold in winter and hot in summer and delays condensation compared to ordinary double-glazing.
- 4- Compared to ordinary double-glazing, the expenditure you would make for Isicam K would make up to you in 1-2 years with the savings you will make in fuel and air conditioning costs.

Isicam Systems	Configuration	Daylight (EN 410)		Solar Energy (EN 410)		Thermal Conductivity (U) W/m2K (EN 673)	
		Transmittance %	Reflectance Outdoor %	Solar Factor %	Shading Coefficient	Dry Air	Argon
	4+12+4	80	14	75	0,86	2,9	2,7
	4+16+4					2,7	2,6
S	4+12+4	79	12	56	0,64	1,6	1,3
	4+16+4					1,3	1,1
K	4+12+4	71	10	44	0,51	1,6	1,3
	4+16+4					1,3	1,1

L

Isicam K L:
Isicam unit, manufactured by using Şişecam Solar Low-E Glass and Şişecam Laminated Glass that offers safety and security, both provides savings for the heating and cooling costs and prevents the fragmentation of glass upon potential injuries.

AL

Isicam K AL:
Isicam unit, manufactured by using Şişecam Solar Low-E Glass and Şişecam Acoustic Laminated Glass, provides sound insulation in addition to saving heating and cooling costs and also has the safety and security features of Şişecam Laminated Glass.

T

Isicam K T:
It is manufactured by using the safety-providing Şişecam Temperable Solar Low-E Glass (heat and solar control glass). When it is broken, it fragments into small and blunt pieces thus reduces the risk of injury. That's why it is eligible for use as a safety glass. The product reduces heating and cooling costs by its heat and solar control features.

3+

Isicam K 3 +:
It is the triple Isicam systems which provides maximum insulation. It offers 4 times better thermal insulation compared to ordinary double glazing units.



TEMPERED GLASS

It is a safety glass and is produced by strengthening glass by applying heat treatment.

Temperable glass thickness: 4-19 mm

Maximum temperable size: 2440 mm x 4200 mm



Advantages;

1- The biggest advantage of tempered glass over normal glass is that it is designed for safety. Unlike normal glass which breaks into large and sharp pieces after breaking, tempered glass breaks down into small, blunt particles. Therefore, the risk of injury is minimized.

2- The thermal tempering process used to produce tempered glass makes it 4-5 times more durable than normal glass. Tempered glass can withstand strong winds, direct impact from hit and bumps and minor explosions.

3- It has a good thermal resistance and can withstand 300 °C thermal shock.

4- While the tempering process makes the tempered glass super hard, it does not affect the clarity of the glass. Tempered glass is crystal clear and transparent which makes it useful in windows, shop windows and glass doors.

5- The manufacturing process that makes tempered glass thermally hard also makes it scratch-resistant.

6- Tempered glass can be applied to clear, opal, tinted and decorative glass.

Usage Areas:

Facade cladding glasses, balcony glass, shower cabin glasses, balustrade or handrail glasses, glass table, glass door, vent-hole glass

For Product Details, Scan the QR Code on Your Device!



YavuzCam

YavuzCam

ŞİŞECAM LAMINATED GLASS

Şişecam Laminated Glass is Şişecam Float Glass's laminated safety and security glass.

Laminated glass is produced by combining two or more layers of glass with one or more intermediate layers (PVB) or special resins under high temperature and pressure.

Advantages;

- 1- It minimizes the risk of injury in accidents caused by people hitting a glass.
- 2- It provides security against impacts that may come from outside. It prevents/delays entry in attacks and theft attempts made with tools such as stones and sticks.
- 3- It contributes to sound insulation.
- 4- It prevents the transmission of ultraviolet (UV) rays which cause fading of the colors of the goods and fabrics by 97-99%.
- 5- It is also used in Isicam units, providing safety and security as well as thermal insulation.
- 6- Effective temperature-control is ensured with Low-E coated laminated glasses.

Usage Areas:

Shop windows, Roof and ceiling windows, Windshields, Railings, Internal partition windows, Museum display units, Bank branches, Hospitals (especially psychiatric clinics), Passages with heavy traffic, Schools, Kindergardens, Police stations and military institutions, Sports complexes with intense activity.





ŞİŞECAM ACOUSTIC LAMINATED GLASS

Şişecam Acoustic Laminated Glass is Şişecam Float Glass's noise control glass. It has been specially developed to provide effective sound insulation in high noise environments. It also has the safety feature of Şişecam Laminated Glass product.

SAFETY AND SECURITY GLASSES

Advantages;

- 1- By reducing the outside noise level to a normal calm environment, the quality of life of individuals is increased.
- 2- It contributes to reducing the harmful effects of noise on human health.
- 3- It minimizes the risk of injury in accidents caused by people hitting a glass.
- 4- It provides security against impacts that may come from outside. It prevents/delays entry in attacks and theft attempts made with tools such as stones and sticks.
- 5- It prevents the transmission of ultraviolet (UV) rays which cause fading of the colors of the goods and fabrics by 97-99%.
- 6- It is also used in Isıcam units, providing safety, security and noise control as well as thermal insulation.
- 7- Effective heat control is provided with Low-E coated acoustic laminated glasses.

There is an approximate 3dB difference between Şişecam Laminated Glass and Şişecam Acoustic Laminated Glass and a 5dB difference between Şişecam Clean Float Glass and Şişecam Acoustic Laminated Glass. 10dB = 50% noise reduction in acoustic isolation.

Usage of Areas:

- 1- Wherever there are intense vehicle and horn noise such as vehicle traffic, airplane, train noise, main street, highway side
- 2- Events with a high musical atmosphere, concert areas
- 3- Meeting rooms
- 4- Translation booths
- 5- Office partitions
- 6- Factories

For Product Details, Scan the QR Code on Your Device!



ŞİŞECAM TEMPERABLE LOW-E GLASS

Şişecam Temperable Low-E Glass is Şişecam Float Glass's temperable heat-control glass.

Isicam S T which is made of Şişecam Temperable Low-E Glass reduces heat losses by 50% compared to ordinary double-glass and saves on heating costs. Tempered heat-control glass is approximately 5 times more durable than non-tempered glass.

Temperable Low-E coating can be applied on clean float glass as well as on green, gray, bronze and blue colored glass upon request.

Glass thicknesses used; 4-6 and 8 mm

Advantages;

- 1- It provides thermal insulation and energy saving.
- 2- It reduces heating costs.
- 3- It does not compromise on transparency and natural daylight.
- 4- In line with architectural trends, it meets the need for safety arising from the expansion of glass surfaces and the increase of glass thickness in buildings. When a glass is broken, it breaks into small pieces that are not sharp and eliminates the risk of injury.
- 5- It provides maximum benefit from the sun's heat.
- 6- It prevents window fronts from being cold in winter and delays condensation on glass surface.

Thermal Transmittance Coefficient (U value) (W/m2K): It is the criterion of thermal insulation in glasses. Lower U-value means better thermal insulation, less heating costs and more comfortable winters.



For Product Details, Scan the QR Code on Your Device!



6mm Temperable Low-E Glass (#2) +16 mm Cavity + 6mm Clear Float Glass	Daylight (EN 410)			CRI	Solar Energy (EN 410)					Thermal Conductivity (U Value) W/m²K (EN 673)
	Transmittance %	Reflectance Outdoor %	Reflectance Indoor %		Direct Transmittance %	Reflectance Outdoor %	Absorption %	Solar Factor (g value) %	Shading Coefficient	Argon
Neutral 71/53	72	19	17	96	48	25	27	53	0,61	1,1
Green 59/36	60	14	17	87	30	10	60	35	0,40	1,1
Blue 45/34	46	10	16	80	28	10	62	33	0,38	1,1
Grey 36/34	36	8	16	94	28	13	59	33	0,38	1,1
Bronze 41/35	42	9	16	93	29	13	57	34	0,39	1,1

4mm Clear Float Glass +16 mm Cavity + (#3) 4mm Temperable Low-E Glass	Daylight (EN 410)			CRI	Solar Energy (EN 410)					Thermal Conductivity (U Value) W/m²K (EN 673)
	Transmittance %	Reflectance Outdoor %	Reflectance Indoor %		Direct Transmittance %	Reflectance Outdoor %	Absorption %	Solar Factor (g value) %	Shading Coefficient	Argon
Neutral 80/64	80	12	13	97	55	25	20	64	0,74	1,1

ŞİŞECAM TEMPERABLE SOLAR LOW-E GLASS

Şişecam Temperable Solar Low-E Glass is Şişecam Float Glass's temperable heat and solar control glass.

Isicam K T which is made of Şişecam Temperable Solar Low-E Glass reduces heat losses by 50% compared to ordinary double-glazing and reduces fuel costs in winter. On the other hand, it reduces solar heat transfer to indoors by 40-65% compared to ordinary double-glazing, thus saving on cooling costs in summer. Tempered heat and solar control glass is approximately 5 times more durable than non-tempered glass.

Temperable Solar Low-E glass can be applied on clean float glass as well as green, gray, bronze and blue colored glass upon request.

Glass thicknesses used; 6 and 8 mm

Advantages;

- 1- It provides solar control and heat insulation together with a single coating.
- 2- In addition to its low reflectivity, it creates more comfortable interior spaces by maximizing energy savings with maximum solar control and heat insulation without sacrificing natural daylight and its transparency.
- 3- It offers solutions to different needs of projects with different performance and colour options.
- 4- In line with architectural trends, it meets the need for safety arising from the expansion of glass surfaces and the increase of glass thickness in buildings. When a glass is broken, it breaks into small pieces that are not sharp and eliminates the risk of injury.
- 5- It prevents window fronts from being cold in winter and hot in summer and delays condensation on glass surface.

6mm Temperable Low-E Glass (#2) + 6mm Clear Float Glass	Daylight (EN 410)			CRI	Solar Energy (EN 410)					Thermal Conductivity (U Value) W/m²K (EN 673)
	Transmittance %	Reflectance Outdoor %	Reflectance Indoor %		Direct Transmittance %	Reflectance Outdoor %	Absorption %	Solar Factor (g value) %	Shading Coefficient	Argon
Neutral 63/29	63	13	14	90	27	40	34	29	0.33	1.0
Neutral 70/40*	69	11	12	94	37	29	34	40	0.46	1.1
Neutral 70/37*	69	13	13	93	34	36	31	37	0.42	1.0
Neutral 58/32	58	21	20	94	29	36	35	32	0.37	1.1
Neutral 51/28	50	23	17	93	26	31	43	29	0.33	1.1
Neutral 50/27	49	16	19	89	23	32	45	26	0.30	1.1
Neutral 50/25*	50	15	14	93	24	35	41	25	0.29	1.0
Neutral 40/22	40	19	14	89	19	35	46	22	0.25	1.0
Deep Blue 40/28	40	19	25	86	23	18	59	28	0.32	1.1
Green 40/28	40	37	27	95	25	26	49	28	0.32	1.1
Green 51/30	51	16	20	88	25	11	64	29	0.34	1.1
Blue 39/26	39	11	20	80	23	11	66	26	0.32	1.1
Grey 31/28	31	9	19	94	23	14	64	28	0.32	1.1
Bronze 35/29	36	10	20	92	24	14	62	29	0.33	1.1
Neutral 50/33*	49	31	23	88	29	36	34	33	0.37	1.1
Green 41/25	39	22	23	79	19	14	67	23	0.26	1.1
Blue 32/24	30	15	22	72	17	13	70	21	0.24	1.1
Grey 28/26	25	12	22	86	16	16	68	20	0.23	1.1
Bronze 31/25	29	14	22	92	17	17	66	21	0.24	1.1
Neutral 43/28	44	34	26	88	25	40	35	28	0.33	1.1
Green 34/20	35	24	15	79	17	15	69	20	0.23	1.1
Blue 26/19	27	16	25	72	15	14	71	19	0.22	1.1
Grey 21/18	22	12	25	85	14	17	69	18	0.21	1.1
Bronze 24/18	26	15	25	92	15	19	69	18	0.21	1.1
Neutral 41/27	42	36	34	89	24	41	36	27	0.31	1.1

SOLUTIONS FOR VARIOUS NEEDS

- HEAT CONTROL**
Due to its Low-E coating, prevents heat loss through glazing. Does not compromise on natural daylight.
- SOLAR CONTROL**
Reduces solar heat gain in summer.
- HEAT & SOLAR CONTROL**
Due to its Solar Control Low-E coating, provides effective thermal insulation by preventing heat loss in winter and decreases solar heat gain in summer. Does not compromise on natural daylight.
- SAFETY**
Due to its temperable property, Temperable Low-E/ Solar Control Low-E Glass is appropriate for using as safety glass as it shatters into small, blunt edged fragments which reduce the risk of injury. Approximately five times stronger than annealed glass against impact.

For Product Details, Scan the QR Code on Your Device!



ŞİŞECAM TENTESOL (REFLECTIVE)

Şişecam Tentesol is Şişecam Float Glass's reflective solar control glass.

Advantages;

- 1- It limits solar heat entry into building, controls excessive brightness of sun and provides a comfortable working and living environment.
- 2- It saves cooling costs by reducing cooling energy consumption in environments where air conditioners are used.
- 3- When viewed from the direction of strong light, it creates a mirror effect. For example; it provides a one-way view from inside to outside during daytime and, on the contrary, from outside to inside at night.
- 4- It provides visual integrity by hiding building elements such as columns, beams, parapet walls, suspended ceilings and installation gaps in the buildings where curtain walls are applied thanks to its reflective feature.
- 5- When the coated surface is used inward (2nd surface) the colour comes into prominence. However, when the coated surface is used outward (1st surface) the reflection comes into prominence.
- 6- Thanks to its hard coating, it can be stored in stocks for a long time without being damaged.
- 7- Tempering, partial tempering, ridging, enamel printing and lamination can be done.

There is a risk of thermal breakage in all solar control glasses. For this reason, it is recommended to use Şişecam Tentesol glasses as tempered or partially tempered. During laminating, all layers of the laminated glass must be tempered or partially tempered against the risks of thermal breakage.

Colors: Silver, green, gray, bronze and blue

For Product Details, Scan the QR Code on Your Device!



Areas of Usage:

Şişecam Tentesol offers solutions for curtain walls and/or windows of commercial buildings, balcony glazing; partition walls or decorative applications in interior architecture.

ŞİŞECAM TENTESOL TITANIUM (TITANIUM REFLECTIVE)

Şişecam Tentesol Titanium is Şişecam Float Glass's reflective solar control glass.

Daylight transmittance is high in this glass. Due to the feature of coating, the color of the bottom glass is observed more clearly.

There is a risk of thermal breakage in all solar control glasses. For this reason, it is recommended to use Şişecam Tentesol glasses as tempered or partially tempered. During laminating, all layers of the laminated glass must be tempered or partially tempered against the risks of thermal breakage.

Colors: Silver, green, gray, bronze and blue

TEMPERABLE COATED GLASSES

For Product Details, Scan the QR Code on Your Device!





FACADE GLAZING (BONDING)

Facade glazing or bonding glazing as it is used in the market is the mechanical assembly of glass panels adhered to an aluminium spacer side by side without any aluminum mounting element being seen on facade surface. The outer glass of the double-glazing must be tempered.

For Product Details, Scan the QR Code on Your Device!



ŞİŞECAM OPAL GLASS

Şişecam Opal Glass is Şişecam Float Glass's decorative glass with a pattern on one side.



DECORATIVE GLASSES

Advantages;

- 1- Glass, one of the most natural materials in home and office designs, carries the glittering touches of sun into your living spaces.
 - 2- Opal glasses produced for an aesthetic interior design reveal the elegance of living spaces.
 - 3- It enables new ideas and creative designs to come to life.
 - 4- It gives a feeling of light and comfort with its natural and transparent texture, especially in narrow areas where light can hardly reach.
 - 5- It offers innovative solutions in interior and exterior design of designers and architects.
 - 6- It allows to experience lightness and privacy at the same time.
 - 7- It offers different levels of image control to suit your needs in every pattern, design or project.
 - 8- By being subjected to lamination process, it gains the feature of safety and security glass.
 - 9- It can be used as tempered in places where safety is required.
 - 10- It gains different visual features by applying mirrors to its patterned surfaces.
- Colours: There are 15 different pattern alternatives for a wide range of applications, from classic to modern. Şişecam Opal Glass pattern names: Puzzle, Gravel, Sprout, Point, Opaque River, Rain, Crystal, Soil, Mandarin, Tulle, Square, Line, Pine Branch, Honeycomb, Mat



SATINE GLASS

Satine process is acid matting or the process of removing silicon particles from the surface of a glass with acid.

Usage Areas:
Shower cabins, balcony windows, stairs, furniture

For Product Details, Scan the
QR Code on Your Device!

**FLOTAL (MIRROR)**

Flotal is the mirror brand of Şişecam Float Glass. It is a decorative material that illuminates places and enriches them by enlarging and expanding with its reflective feature.

Advantages;

1- It illuminates a place by reflecting sunlight and artificial light indoors.

2- It gives aesthetics and freshness to the areas where it is applied.

3- It adds new dimensions to narrow, formless and dim spaces.

Colours: Colorless, green, gray, bronze and blue

Usage Areas:

Flotal is used in bathrooms, bedrooms, kitchens, shops, sports and exhibition halls, kindergardens, interior spaces to add depth and dimension.

It is suitable for use in areas where places are desired to be larger, more spacious, deep, high and bright.



For Product Details, Scan the
QR Code on Your Device!



ŞİŞECAM TINTED FLOAT GLASS

Şişecam Tinted Float Glass is a blended colored glass of Şişecam Float Glass. It is produced by adding coloring materials into frit during production.

There is a risk of thermal breakage in all solar control glasses. For this reason, it is recommended to use Şişecam Tentesol glasses as tempered or partially tempered. During laminating, all layers of the laminated glass must be tempered or partially tempered against the risks of thermal breakage.

Colors: Green, gray, bronze, blue, turquoise and dark gray

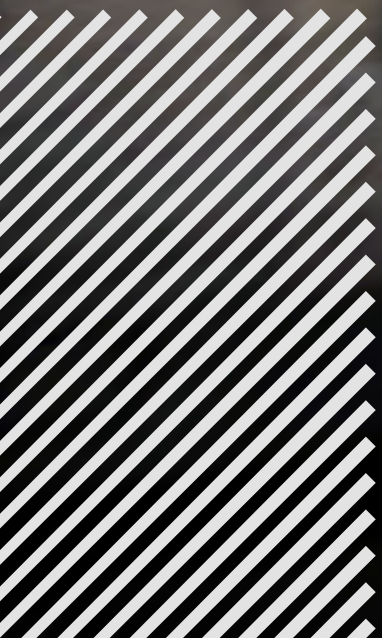


Areas of Usage:

Şişecam Tinted Float Glass is used mainly in non-residential buildings with curtain walls and in all buildings that require solar control such as windows, parapets, in front of walls, skylights and glass balconies.

It is also used in decoration as a table, coffee table, shelf, door, shower cabin and partition glass.







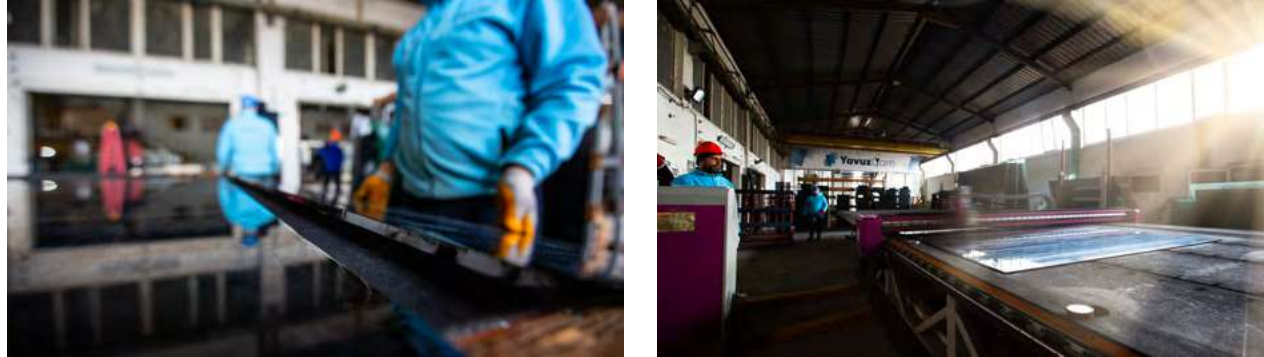
PRODUCTION

AUTOMATIC GLASS LOADING - CUTTING - BREAKING LINES

Glass cutting process is carried out with jumbo glass cutting and machine size cutting lines.

There are 2 jumbo glass cutting lines of CMS Makine brand, 1 machine size glass cutting line of Intermac brand, 1 machine size glass cutting table of Bottero brand and 1 laminated glass cutting line of Bottero brand. One of the jumbo glass cutting lines is suitable for cutting coated glass and edge scraping is performed here.

Glass types and combinations specified in an order are cut with automatic cutting lines according to the desired dimensions.



GLASS PROCESSING LINES

Grinding; is the process of finishing glass edges and corners. It is applied to prevent glass edges and corners from causing cuts and injuries in any way. The process of removing sharpness of glass edges and corners is called band grinding, the process of polishing with 90° and 45° inclinations is called straight grinding, the process of polishing in arc form is called herringbone or C grinding, and the gradual grinding is called profile grinding. Polishing is the polishing of the cut surface which becomes opaque after grinding with a second process.

Before tempering process, glasses must be sanded or grinded, burrs on edge surfaces must be removed. Otherwise, glasses would get broken during tempering process.

There are 2 double-sided grinding machines of Suntech brand and 1 straight line glass grinding machine of Liaoda (LAD) brand in our factory.



Sanding; is a process that ensures that the edges and corners of glass do not cut and look more aesthetically pleasing. The difference from grinding is that it has only straight-shape finishing of edges and corners and surface opaqueness.

Before tempering process, glasses must be sanded or grinded, burrs on edge surfaces must be removed. Otherwise, glasses would get broken during tempering process. There is 1 vertical sanding machine of CMS Makine brand in our factory.

CNC Glass Processing Machine; Drilling, grinding and cutting operations are performed automatically according to the technical drawing. Glass doors, vent-hole glasses, shaped table glasses, the processing of decorative glass products such as some furniture glasses is carried out in our CNC glass processing machine. There is 1 CNC glass processing machine of Intermac brand in our factory.

Glass Hole Drilling Machine; In various thickness, size and hole sizes of glasses, positions of edges, corners and holes are determined relatively to each other and holes are drilled with and without countersunk drill bits of different diameters. There is 1 glass hole drilling machine of Deka Makine brand in our factory.



WASHING GLASS

Glasses must be washed before tempering and insulating glass joining processes. Otherwise, stains may occur on surface.

In our factory, there are 2 glass washing machines of Suntech brand before tempering process and 1 glass washing machine of Best Machine brand before Isıcam joining process.



TEMPERING LINES

It is a safety glass and is produced by strengthening glass by applying heat treatment. The tempering process is first heating glasses up to the temperatures between 650°C and 680°C with the heating systems specific to this process and then suddenly cooling of glasses with air. As a result of the tempering process, compression stress (compression) to the outer surfaces of the glass and an indirect tensile stress (tension) to the middle of the glass are gained. Thus, glass becomes resistant to tensile and impacts.

After tempering process, cutting, drilling, edging and surface treatment can not be done on glasses.

Temperable glass thicknesses: 4-19 mm

Maximum temperable size: 2440 mm x 4200 mm

There are 2 horizontal rotary glass tempering furnaces of North Glass brand in our factory. These furnaces have convectional heating motors and thus can perform the tempering process of Low-E and Solar Low-E coated glasses. Production is carried out according to the TS EN 12150 standard.



ISICAM LINE

Isicam, also known as insulated glass or double-glass, is produced on the Isicam line of Best Makine brand. The glasses to be turned into an insulating glass can be tempered beforehand according to the order.

Before insulating glass production starts space bars are cut or bent in accordance with glass dimensions, clipped from corners, filled with desiccant and butyl which is the internal sealing material is applied to edges.

There are 1 automatic profile bending machine of Best Makine brand, 1 desiccant filling machine of Best Makine brand and 1 butyl filling machine of Best Makine brand in our factory.

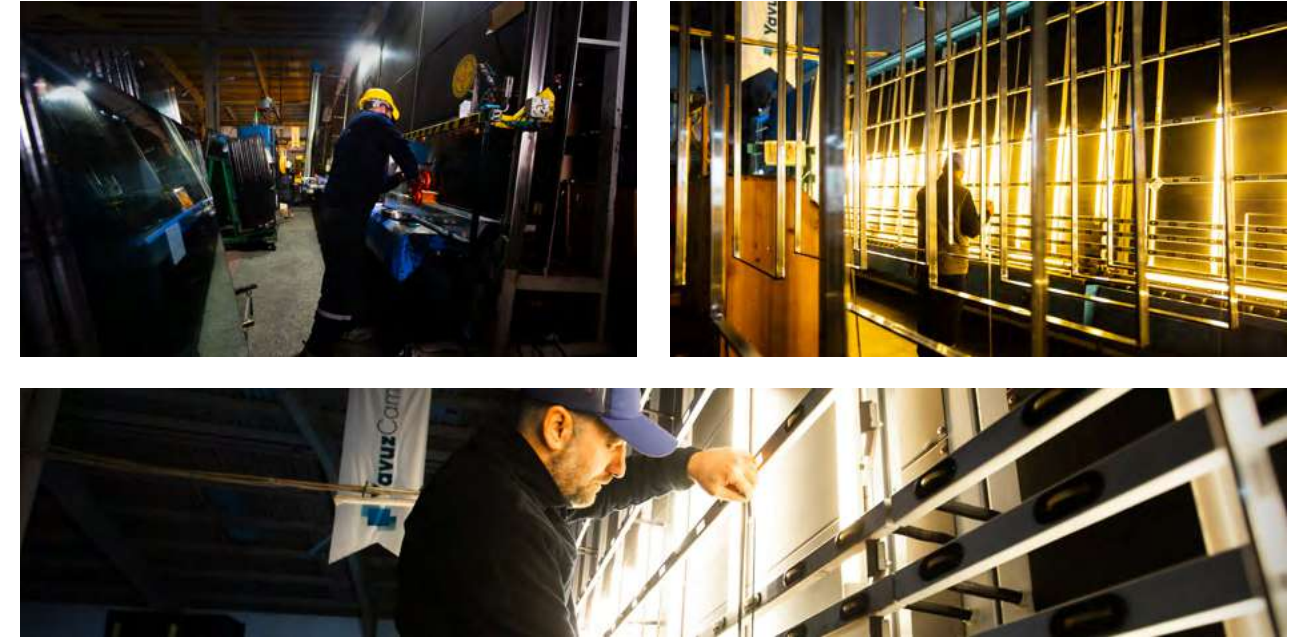
The Isicam line starts with the glass washing module. After glass surfaces are thoroughly cleaned in this stage, they are transferred to the press section where they are attached to each other with space bars. The edges of double-glass coming out of the press section are filled with either polyurethane or thiokol (polysulfide) by a robot in the automatic filling material section which is the last stage. Polyurethane and thiokol are external sealing materials. Finally, finished product is taken to glass stacking stands.

The most used combinations in Isicam Systems are in the form of 4 mm glass + 12 mm space bar + 4 mm glass and 4 mm glass + 16 mm space bar + 4 mm glass.

Glass thicknesses used: 4-5-6 mm

Space bar thicknesses used: 9-10-11-12-14-16-18-19-20-21-22 mm

Production is carried out according to TS EN 1279-6 standard.



FACADE GLAZING PRODUCTION (BONDING)

Facade glazing or bonding glazing as it is used in the market is the mechanical assembly of glass panels adhered to an aluminium spacer side by side without any aluminum mounting element being seen on facade surface. The assembly process is carried out with a 15 mm joint between glasses.

Glass facade systems are applied with the desired type of silicone, covered and semi-covered.

The combination of double-glazing to be used on the facade is determined by the purpose of use of the building, facade, types of glass that have performance values suitable for weather and climatic conditions in a place where it is located and the glass color suitable for the design of a project.

The glasses to be used on facades are adhered to an aluminium spacer by using special silicone that is not affected by UV rays and distance determining tapes. There is 1 manual silicone filling machine of Best Makine brand in our factory.



QUALITY CERTIFICATES



REFERENCES



MARINCITY TRABZON

BALCONY GLASS: **8 MM TEMPERED FLOAT GLASS**

**6 MM 62/44 TEMPERED SOLAR LOW-E GLASS + 18 MM BLACK SPACER +
6 MM TEMPERED FLOAT GLASS**



HONDA PLAZA TRABZON

6 MM TEMPERED REFLECTIVE GRAY GLASS + 12 MM SPACER +
6 MM TEMPERED FLOAT GLASS



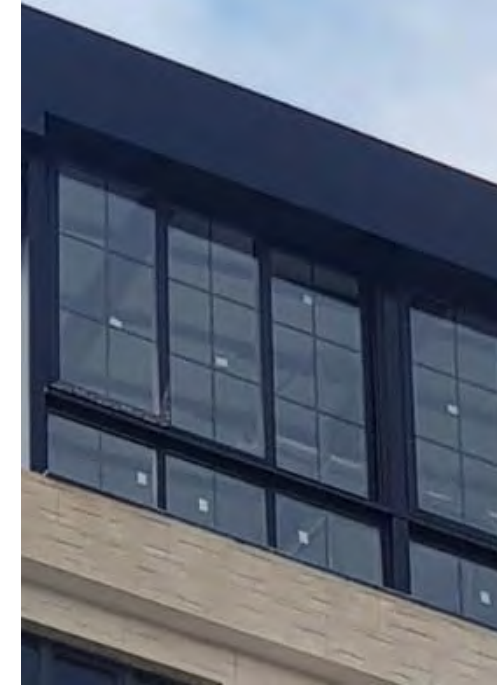
AKERKO SEA FOOD TRABZON

6 MM 40/28 DEEP GREEN TEMPERED SOLAR LOW-E GLASS + 12 MM SPACER +
6 MM TEMPERED FLOAT GLASS



KAUFT YAPI HİZMETLERİ KUTAI SI (GEORGIA)

5 MM TEMPERED FLOAT GLASS + 12 MM SPACER + 5 MM TEMPERED FLOAT GLASS







yavuzcam.com



+90 530 768 31 16
yavuzcam.com | **contact@yavuzcam.com**

Organized Industrial Zone, **Arsin** / **TRABZON**



 /company/yavuzcam

 /yavuz_cam_trabzon

 /yavuzcam61